



Thank you for purchasing this product. Before using the product, read through the user manual to ensure that you will use the product correctly. Please keep this manual for future reference.

### ■ Features

- Tailored to capture sound from guitar amps, brass and woodwinds, drums and percussion instruments with equal clarity and precision
- Proprietary double-dome diaphragm construction improves high-frequency and transient response
- Excels in high-SPL applications and maintains directionality across the entire frequency range
- Minimal off-axis coloration (frequency response is nearly identical at 0°, 90°, and 180°) helps to maintain phase coherence in multiple microphone setups
- Switchable low-pass filter removes harsh, high-frequency content without negatively affecting the overall tone of an instrument
- Low-profile design allows microphone to be placed easily and unobtrusively in a wide variety of setups
- Rugged, brass metal construction ensures dependable performance in live music applications
- Isolation stand clamp provides secure mounting, versatile positioning, and effective dampening of unwanted mechanical noise

### ■ Notes on use

The AE2300 is a dynamic microphone with a cardioid polar pattern. It is designed specifically for musical instrument pickup in the studio and on stage.

The cardioid polar pattern of the microphone is more sensitive to sound originating directly in front of the element, making it useful for controlling feedback and reducing pickup of unwanted sounds.

The output of the microphone is a 3-pin XLRM-type connector.

The microphone is equipped with a switch that permits choice of flat response or high-frequency roll-off (via integral 6 kHz low-pass filter).

Avoid leaving the microphone in the open sun or in areas where temperatures exceed 43°C for extended periods. Extremely high humidity should also be avoided.

### ■ Safety precaution

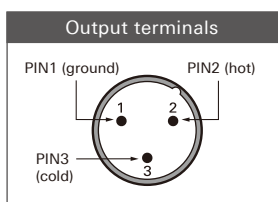
Although this product was designed to be used safely, failing to use it correctly may result in an accident. To ensure safety, observe all warnings and cautions while using the product.

### ■ Cautions for the product

- Do not subject the product to strong impact to avoid malfunction.
- Do not disassemble, modify or attempt to repair the product.
- Do not handle the product with wet hands to avoid electric shock or injury.
- Do not store the product under direct sunlight, near heating devices or in a hot, humid or dusty place.

### ■ Connection procedure

Connect the output terminals of the microphone to a device that has a microphone input (balanced input). The output connector is an XLRM-type with polarity as shown in the figure below.



### ■ Specifications

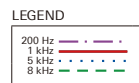
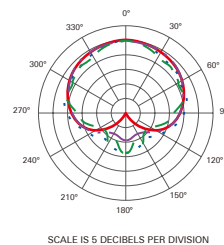
Element	Dynamic
Polar pattern	Cardioid
Frequency response	60 - 20,000 Hz
High Frequency roll-off	6,000 Hz, 6 dB/octave
Open circuit sensitivity	-57 dB (1.4 mV) re 1V at 1 Pa
Impedance	250 ohms
Switches	Flat, roll-off
Weight	138 g
Dimensions	95.6 mm long, 28.0 mm maximum diameter
Output connector	Integral 3-pin XLRM-type
Accessories furnished	AT8471 isolation clamp for 5/8"-27 threaded stands; 5/8"-27 to 3/8"-16 threaded adapter; soft protective pouch

• 1 Pascal = 10 dynes/cm<sup>2</sup> = 10 microbars = 94 dB SPL

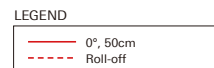
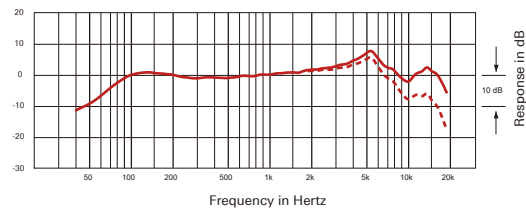
\* Typical, A-weighted, using Audio Precision System One.

For product improvement, the product is subject to modification without notice.

### ■ Polar pattern



### ■ Frequency response





感谢您购买本产品。在使用产品之前，请全文浏览本用户手册以确保您将正确地使用本产品。请妥善保存本手册，以供将来参考。

## 产品特点

- 特别为收录来自吉他扩音器、铜管和木管乐器、鼓及打击乐器的声音而定制，以获得同样的清晰度和准确度
- 专利的双球顶振膜结构，可改善高频音域的瞬间响应
- 良好的耐高声压级的应用，并能整个频率范围内保持着一致的收音方向性
- 更小的离轴声染色效应（频率响应在0°、90°及180°的位置中几乎相同），这有助于在多个话筒设置时，维持话筒间的相位相干性
- 设有高截滤波开关，能消除在高频内容中的刺耳声，使乐器的整体基调不会造成负面影响
- 低调的设计可让话筒更方便而不显眼地作各种设置
- 坚固的黄铜金属结构，可确保在现场演出使用时的可靠性
- 隔离话筒夹能提供安全的安装，并可作多种定位功能，而且更能有效阻隔不必要的机械噪声

## 使用注意事项

AE2300是一枚心形指向性动圈话筒，专为录音棚和舞台上的乐器收音而设计。

话筒的心形指向性设计，能为前端的声源作更敏感收音，是直接和音源引起感应的重要元素，有利于控制反馈和减少不必要的声音干扰。

话筒的XLRM卡农输出端为平衡输出。

话筒上设有一个开关，可选择以平直的频率响应收音或作高频响应衰减（通过内置的6kHz低截滤波器）。

把话筒暴露于高温中可能导致输出电平逐渐及永久性减弱，应避免将话筒留在日晒的地方或长时间置于温度超过43°C的地方，而极高湿度也应避免。

## 安全预防措施

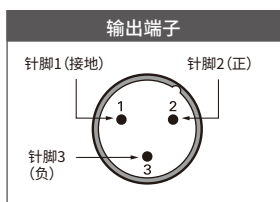
虽然本产品采用安全设计，但使用不当仍可能发生事故。为了确保安全，使用本产品时请注意全部警告和提醒。

## 本产品注意事项

- 切勿让本产品遭受强烈冲击，以避免发生故障。
- 切勿拆开、改装或尝试维修本产品。
- 切勿用湿手握持本产品，以免触电或受伤。
- 切勿将本产品存放在阳光直射的地方、加热装置附近或者炎热、潮湿或多尘的地方。

## 连接步骤

将话筒的输出端子连接到具有话筒输入（平衡输入）的设备。输出接口是XLRM型接口，其极性如下图所示。



## 规格

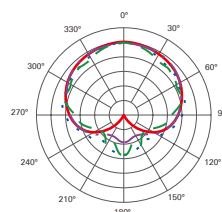
元件	动圈式
指向性	心形指向性
频率响应	60 - 20,000 Hz
高截滤波	6,000 Hz, 6 dB/octave
开路灵敏度	-57 dB (1.4mV) 以 1V 于 1Pa
输出阻抗	250 欧姆
噪声	平直, 高截滤波
重量	138 克
尺寸	长度 95.6 mm, 最大直径 28.0 mm
输出端子	内置式 3 针卡农公头
附带配件	AT8471 防震式 5/8"-27 接头话筒夹; 5/8"-27 至 3/8"-16 转接头、 保護袋

\* 1 帕 = 10 达因 / 平方厘米 = 10 微巴 = 94 dB SPL

\* 典型, A 计权, 使用 Audio Precision System One

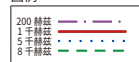
因产品改进, 本产品会随时改装, 恕不另行通知。

## 指向性

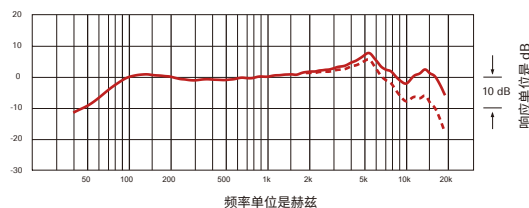


比例是每分隔线 5 分贝

图例



## 频率响应



图例

— 0°, 50 厘米

- - - 高通滤波